

Destination freedom.

Mobile Suites

2025



DS RV
Luxury Suites





40 KSSB4 - Toffee Grove Cabinets with Invoke
Dinette Chairs and Nutmeg (Leather)

Room to live.

Established in 2003, DRV Luxury Suites has set the gold standard for those who dream of owning an unparalleled fifth wheel or luxury asset hauler. Our secret? It starts with you, our valued customer. We listen intently to your aspirations and desires, then pull out all the stops to craft the high-end fifth wheel of your dreams — one that stands for unwavering quality, residential-grade construction, and opulent features. We deliver without compromise, complete with customer service that exceeds expectations, and all-season livability for a truly fulfilling full-timing experience.

Choosing DRV means more than acquiring a luxury fifth wheel; it's about upgrading to a distinguished lifestyle on the move. With DRV, you gain not just a vehicle, but a steadfast companion that assures safety, comfort, and peace of mind, regardless of where you're headed. As you're now poised to indulge in the finest moments of life, opt for the luxury coach that embodies freedom with every mile traveled.







Mobile Suites

40 KSSB4

The 40 KSSB4 is the epitome of compact luxury, perfectly fitting a full-featured residential kitchen, a dining and entertainment area, and a spacious master suite all within a 41-foot layout. Each Mobile Suite living room is furnished with a 55" smart TV, an elegant fireplace, day/night roller shades, ambient lighting, and plush residential furniture.

This floor plan is further enhanced by an impressive staircase that ascends to the master bedroom, a well-appointed bathroom, a linen cabinet, and a generously sized closet housing a washer/dryer. The dedicated laundry space also serves as a versatile storage and work area in case the washer and dryer are unnecessary.

With the 40 KSSB4, there's no need to sacrifice amenities for a more manageable size. Travel comfortably and conveniently to all your favorite destinations.





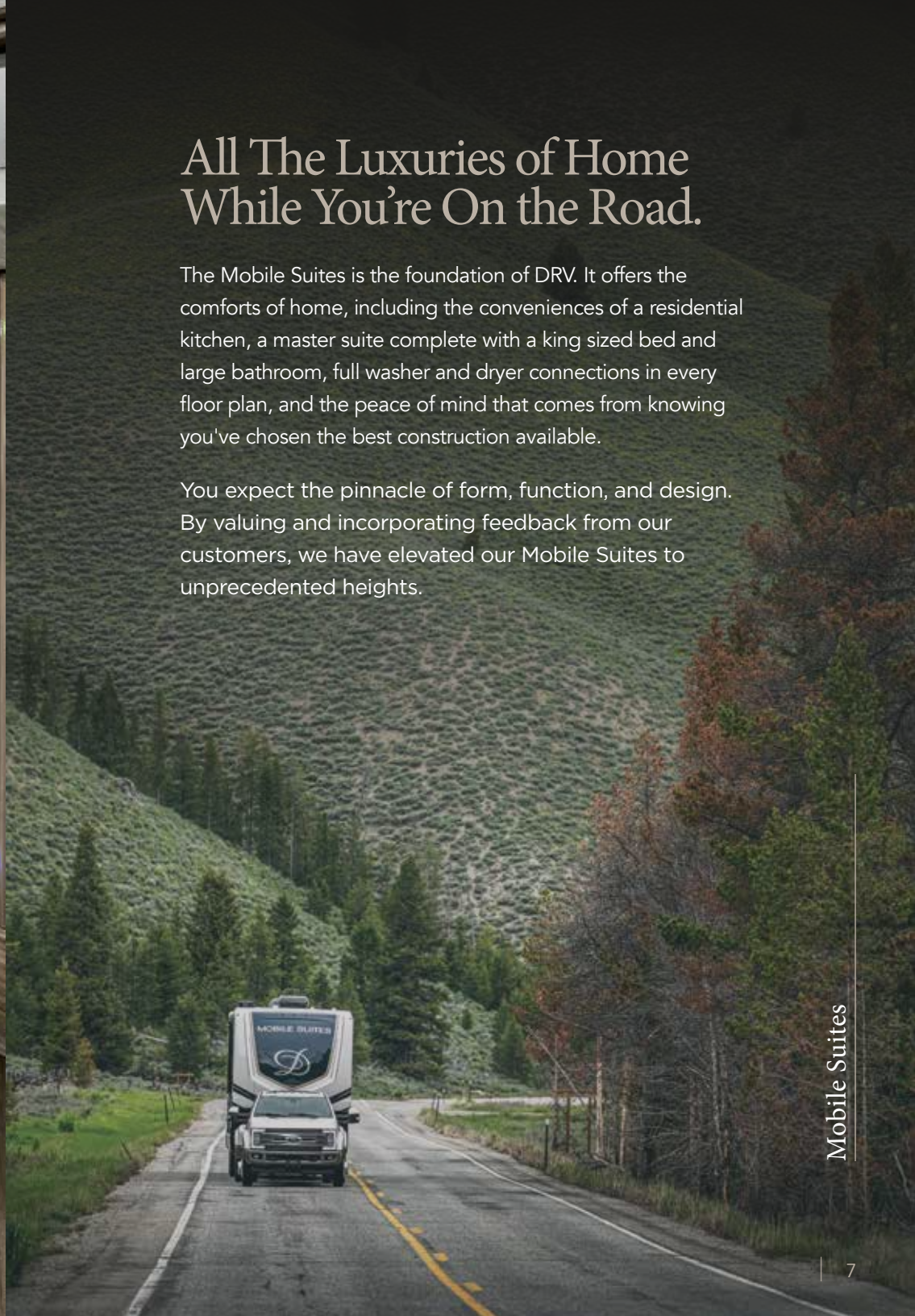


Nashville - Toffee Grove Cabinetry with
Nutmeg (Leather) Sofas and Theater Seats

All The Luxuries of Home While You're On the Road.

The Mobile Suites is the foundation of DRV. It offers the comforts of home, including the conveniences of a residential kitchen, a master suite complete with a king sized bed and large bathroom, full washer and dryer connections in every floor plan, and the peace of mind that comes from knowing you've chosen the best construction available.

You expect the pinnacle of form, function, and design. By valuing and incorporating feedback from our customers, we have elevated our Mobile Suites to unprecedented heights.





Mobile Suites

Nashville

With DRV... you can have more.

Every model is equipped with a 20 cubic foot residential refrigerator, a residential-style gas oven, a stainless steel dishwasher, a convection microwave, and soft-close drawers and doors. The interiors boast hand-laid luxury vinyl plank flooring throughout the main floor and upper deck, complemented by a custom tile backsplash on solid surface countertops.

King beds are a standard feature in all floor plans, accommodating full under-bed storage which is ideal for those who live on the road as they navigate varying climates. Each master retreat includes nightstands, over-the-bed storage, and independently controlled reading lights on each side of the bed, enhancing both functionality and comfort.







Mobile Suites

Orlando

Your Suite Awaits You.

Mobile Suites proudly presents The Orlando, our latest floor plan innovation. This unique design features a master bathroom situated at the rear of the RV, ensuring maximum privacy and serenity. Notably, The Orlando is the sole design in the DRV collection boasting a front bunkhouse, coupled with a designated workspace complete with a desk — a dream setup for families and those who work on the go. The heart of this home-on-wheels is a spacious, cross-conversational kitchen and living area, fully furnished with residential appliances, a cozy fireplace, an entertainment center, and comfortable seating for four. Additionally, the convenience of a full washer and dryer hookup is smartly incorporated into the half bath.





It's all in the details.

Engineered for dependability and lasting beauty, your Mobile Suite will be every bit as sophisticated as you are. Loaded with all the amenities of your home our industry envied 15" box tube frame means your new home on wheels is built strong to protect your investment and personal belongings. The structural foundation isn't the only detail we focus on. The 3 1/4" thick insulated sidewalls protect you from whatever climate you travel to. Giving you peace of mind and true freedom knowing the details are covered.





Arctic Mist

Elite Package Full Body Paint (Option)



Capetown Veil

Elite Package Full Body Paint (Option)



Cobblestone Cove

Partial Body Paint (Standard)



Denali Ridge

Partial Body Paint (Standard)



Havana Moon

Partial Body Paint (Standard)



Invoke Dinette Chairs

Mobile Suites

2025



Chai Hickory Cabinets



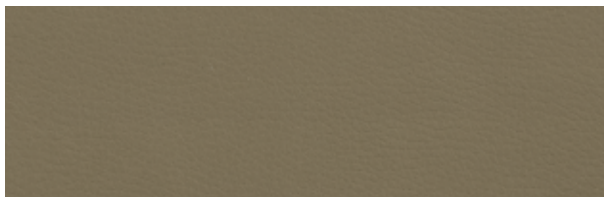
Italian White Cabinets



Toffee Grove Cabinets



Aurora Ramo Countertops



Nutmeg Sofas



Pewter Sofas



Sand Sofas



Strata Flooring



Willow Flooring



Virtual Gloss Carpet

The foundation of true freedom.

If there's one thing we've learned after all these years on the road, it's this: People choose DRV Luxury Suites because they're ready to *enjoy* life. They don't want to spend their time worrying about things like quality, construction and service. Which is why we put so much thought into them in the first place. Every DRV product is built to *last* — with our unique triple-stacked box tube frame, the thickest sidewalls in the industry, screwed and glued aluminum framing for unshakable stability, and dozens of no-excuses features that'll keep you safe, comfortable and worry-free, even when Mother Nature's at her worst.

Technology

State-of-the-art Level-Up™ leveling system and industrial hydraulic system. Level your coach with the push of a button.

Automotive style Kodiak® disc brakes. Limited lifetime warranty; smoother stopping; shorter stopping distance; low maintenance cost.

Heavy duty H-rated 17.5" tires and aluminum eight-bolt wheels. Heavier load capacity. Special tread pattern to dissipate heat. Tires are regroovable for miles and miles of safe use. Wheels are lightweight and will not rust.

SeeLevel tank monitoring system. Uses sonar to provide instant and accurate readings of all tanks.

ASA Voyager® 270 camera system. For better RV maneuvering and visibility on the road, the ASA Voyager® 270 camera system features a three-camera bird's eye view, turn signal triggers and audible blind spot alerts.

Ghost Audio. The new transducer audio system brought exclusively to DRV through a partnership with ASA Electronics. Ghost Audio is powered by Bongiovi DPS tuning software to provide impressive sound without a visible speaker. Instead, hidden transducers attached to the back of walls transform them into a sound system that fills the entire coach with high-fidelity audio.

At DRV Luxury Suites, we build each fifth wheel the same way we'd build our own home. And we appoint it with the finest luxury features available — lush homelike furnishings, fireplaces, large French door refrigerators, stainless steel appliances, top-of-the-line electronics and more. Then we back it up with the best quality control and customer service in the industry. Every single coach is tested before it ever leaves the factory. And, if you should someday have a problem, rest assured, we'll get it fixed. No matter where you are. Day or night.



Structure

Custom engineered and tested 15" triple steel box tube chassis. Super strong foundation to build a lasting, high quality fifth wheel.

All-weather heavy duty aluminum floor system. The floor is screwed and bolted together and will not rot over time. We also refuse to use staples which eventually work up through the floor covering.

R-29 insulated frame floor system with three weather barriers. Warm floors for extended or full-time use; keep out condensation.

Slide floors will feature a **water-resistant composite subflooring**, which is lighter than traditional plywood and offers superior adhesion and durability against moisture. This lightweight material also contributes to improved fuel efficiency and allows for more cargo capacity.



Refinements

Conveniently located wall switches control all lighting. Fingertip control of all task and decorative lighting.

Overhead LED room lighting on dimmer switches. Personal light control.

Designer raised panel cabinet doors and soft-close drawers and doors. Optimal storage; residential look; residential function.

NOTE: Some features shown are exclusive to specific makes and models. Please review the complete Standards and Options list for availability.

Livability

Screwed and glued construction. Solid; 16" o.c. stud spacing.

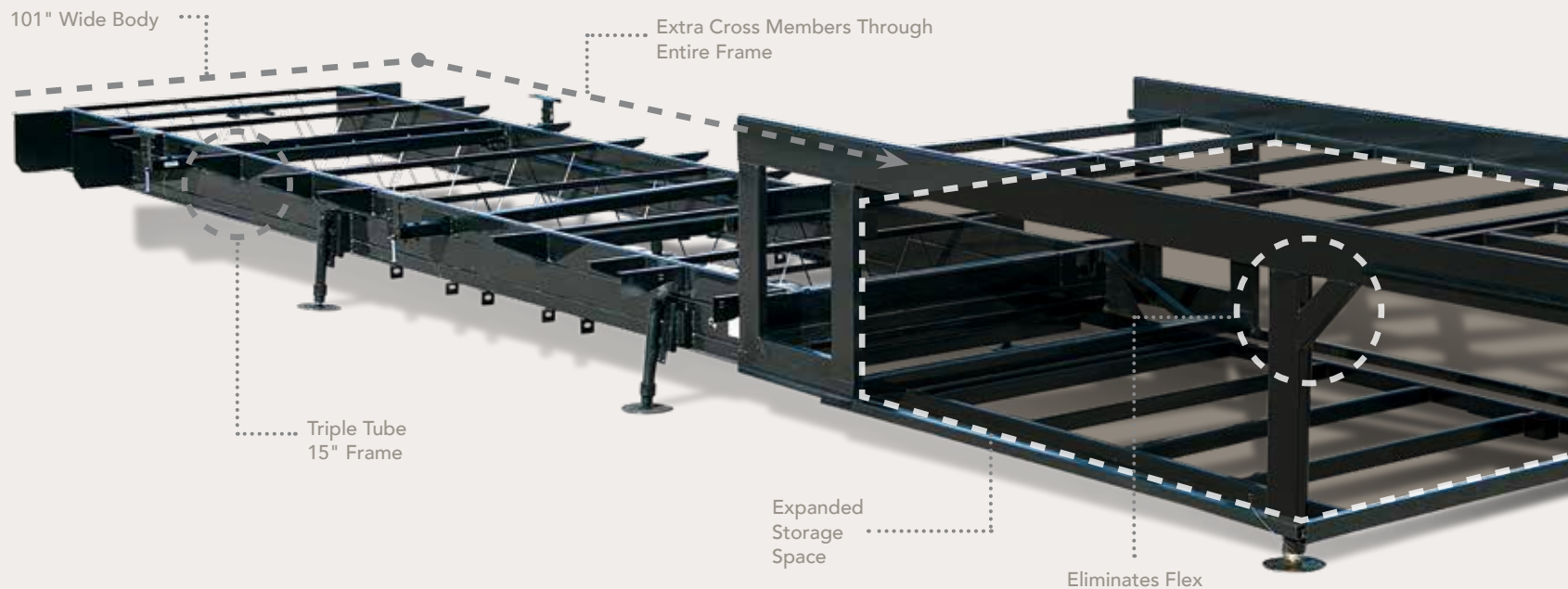
3.25" aluminum framed walls with R-16 insulated rating. Exclusive foam core vapor barrier. Lightweight; lower heating and cooling cost; noise reduction; eliminates chance of condensation.

Radiused aluminum roof rafters on 16" centers. More space; more insulation; improved water run-off; maximum load capacity per square foot.

R-25 insulated roof system with plywood and rubber or fiberglass covering. Improved weather barrier; sound deadening; low maintenance; lower heating and cooling costs.

Soft touch interior ceiling. Sound proofing; easy to clean; extra insulation.





Stacked triple-tube steel frame for 15" of maximum strength; the largest foundation on any fifth wheel in the industry.



Pinless hydraulic jacks are mounted at a 5-degree angle for maximum stability.



Commercial hydraulic rack & pinion slide-outs. All gear boxes are located inside the frame for the ultimate weather protection.



Residentially hung sidewalls are carriage-bolted into the floor for solid construction and superior strength.



R-16 residential insulation completely surrounds all of our walls and slides. Best insulation in the industry and eco-friendly!



Solid Box Steel Frame

The foundation is the most important part of your home. It needs to be strong, reliable and able to last the test of time. DRV's custom-engineered 15" triple box tube frame measures 101" wide – the largest, most rigid fifth wheel frame in the industry. This design eliminates flex around the pin box and allows us to frame even the upper deck with steel to open up the storage compartment, providing you with space to fit all your personal belongings.

DRV 6-Jack Level-Up System

Designed by DRV, our 6-jack level-up system provides quick and easy leveling and the strength to stabilize the coach when set up.



Our 3 1/4" walls are the thickest in the industry, giving you maximum insulation from noise and weather. The exclusive foam core vapor barrier eliminates condensation.



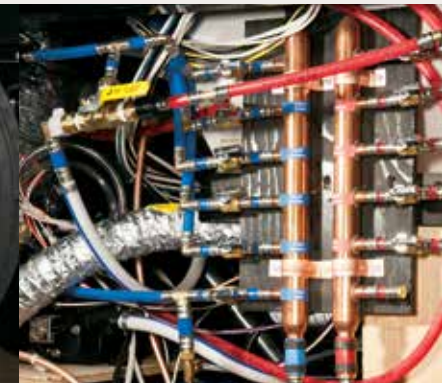
MORryde® I.S. Suspension eliminates the axle and leaf springs, allowing each tire to work independently. With 5 1/2" of travel per assembly, MORryde® I.S. will absorb road shock and protect your home for its lifetime.



Commercial E-Z Lube® hubs surrounded by 8 large 5/8" stud bolts and standard automotive disc brakes round out the safety features of every DRV unit.



Heavy-duty 17.5" tires provide increased load capacity while staying cool on long hauls. We use truck tires, not RV tires, to ensure better performance and peace of mind.

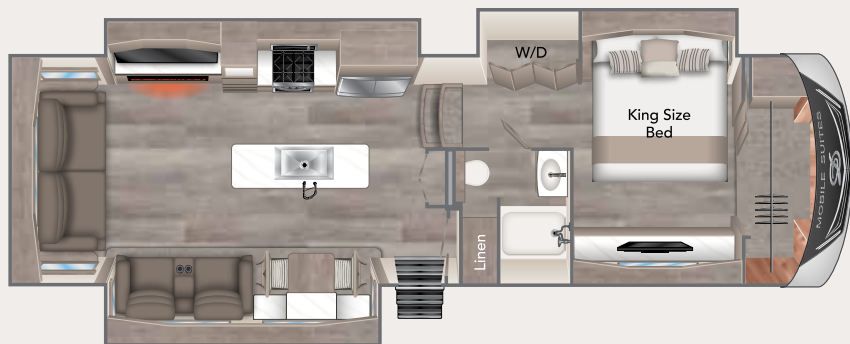


A copper water manifold comes standard, ensuring equal water pressure throughout your home. And each water line is clearly labeled and has its own shut-off valve, allowing you to isolate a single line without shutting off water to the rest of your home.



Reliability

- High pressure hydraulic lines with metal fittings
- Individual push-button slide room controls
- Industrial stabilizer jacks located and wind tested to provide maximum stability
- Heavy gauge UL copper wiring
- Residential copper water manifold
- Reliable LED lights
- Convenient lights at all exterior service locations
- Gel coat fiberglass walls and exterior doors
- Plywood roof decking
- Extra sound proofing in floor, walls and roof
- Ultra quiet Trio Airflow A/C System
- Automotive disc brakes
- Furnace return air replaceable filter
- Oversized basement storage doors with gas lift cylinders
- Custom painted exterior
- Tough-skin, specially coated rock guard



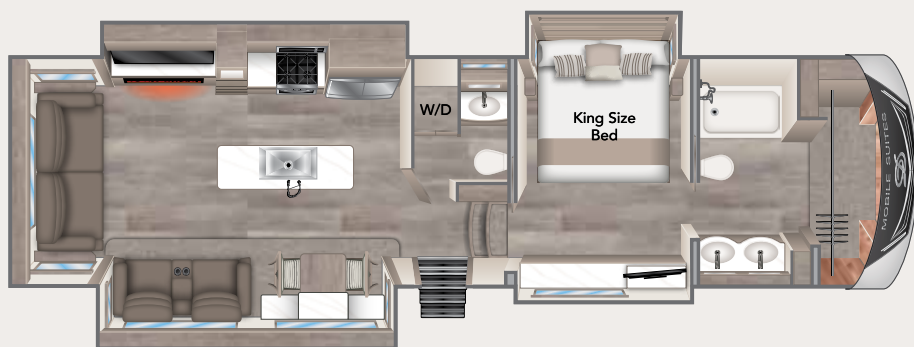
36 RSSB3

Length 38' 7" | Est. Dry Weight 16,600 Lbs.



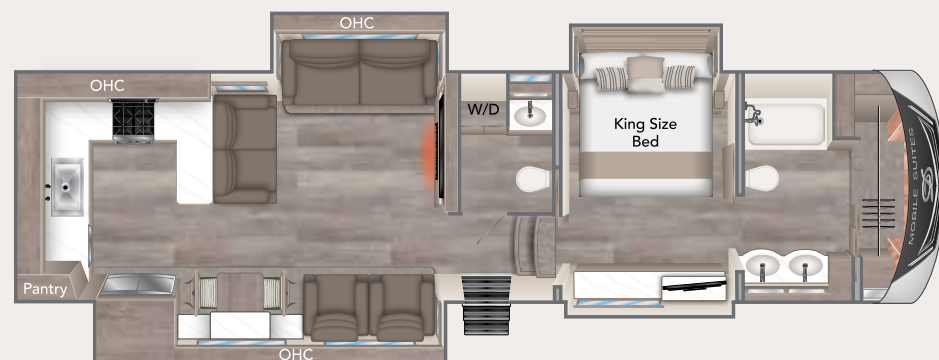
41 FKMB

Length 43' 1" | Est. Dry 18,780



39 DBRS3

Length 41' 6" | Est. Dry 17,360



41 RKDB

Length 43' 1" | Est. Dry 18,220



40 KSSB4

Length 42' 3" | Est. Dry 18,380



43 MANHATTAN

Length 44' 11" | Est. Dry 19,985

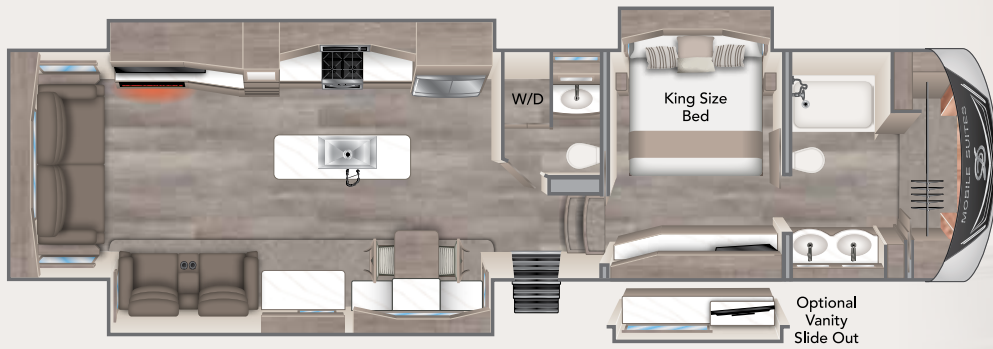
ALL MODELS FEATURE *Note: All lengths are measured from the pin box to the rear cap. All dry weights are estimates depending on options. For GVWR please visit our website.*

• Fresh Tank - 100 gal.

• Gray Tank - 75 gal.

• Black Tank - 50 gal.

• SeeLevel Tank Monitor



44 HOUSTON

Length 46' 0" | Est. Dry 20,215



44 NASHVILLE

Length 46' 0" | Est. Dry 19,730



44 ORLANDO

Length 46' 0" | Est. Dry 20,860



Standards

Frame/Running Gear:

- 17 1/2" H-Rated Re-Groovable Tires
- Heavy Duty Grease Bolt Shackles w/Bronze Bushing
- Automotive Style Disc Brakes
- Heavy Duty 8,000 Lb. Rated Axles
- Commercial Grade EZ Lube Hubs
- 15" Triple Stacked Box Tube Frame
- 101" Wide Body
- Industrial Hydraulic System for Jacks & Lower Level Slides
- Electric Bedroom Slide
- Slide Outs w/Select Push Button Controls
- Pinless, Industrial Hydraulic Front Landing Jacks at 5° Outboard Angle

Construction: Floor

- 3" Thick Floor
- 14" O.C. Floor Aluminum Floor Joists
- Screwed & Glued Joist Construction
- 5/8" Tongue & Groove Plywood Flooring
- Residential Perimeter Heating
- Residential Rated R29 Formaldehyde Free Insulation

Construction: Walls/Slides

- 3 1/4" Thick Walls/Slides
- 16" O.C. Stud Spacing
- Screwed & Glued Aluminum Stud Construction
- 1/4" Monsanto® Fome-Cor Vapor Barrier (Eliminates Condensation)
- 1/4" Thick High Gloss Gelcoat Fiberglass
- Azdel OnBoard Composite Panels
- Residential Rated R16 Formaldehyde Free Insulation
- Composite Slide Floors

Construction: Roof

- 16" O.C. Rafter Spacing
- Residential Rated R25 Formaldehyde Free Insulation
- 1/2" Plywood Roof Overlayment
- Tuff-Flex Roof
- Soft-Touch Vinyl Ceiling, Including Interior Slide-Out Ceilings

Exterior:

- Straight Roof Line w/8' Tall Interior Slide Out Height
- High Gloss Gelcoat Fiberglass
- High Gloss Gelcoat Fiberglass Molded Caps

- Custom Painted Exterior w/Clear Coat
- Frameless Tinted Safety Glass Windows
- LED Back-Up Lights
- Commercial LED Exterior Clearance Lights
- Front Cap Turn Signal
- LED Docking Lights
- Dual 78" Entry Door
- Metal Slam Door Compartment Latches
- Extra Thick Compartment Doors w/Gas Struts
- Motion Sensor LED Lights in Basement
- Custom Enlarged Control Center w/LED Lighting
- Lend-a-Hand Exterior Grab Handle
- Power Awning w/Aluminum Weather Shield (Over Both Entry Doors)
- Water Pump Switch at Outside Hookup Center

Systems/Tanks:

- 50 Amp Service w/Detachable Cord
- 80 Amp 12 VDC Converter
- 100 Gal. Fresh Water Tank
- 75 Gal. Grey Water Tank w/Power Flush
- 50 Gal. Black Water Tank w/Power Flush
- SeeLevel Tank Monitoring System on All Tanks

- Residential Type 1/2" PEX Water Lines
- Exclusive Copper Water Manifold w/Individual Shut-Off Valves
- Whole House Water Filtration System
- Multi-Switch Water Bypass System
- Slide Out Propane Tray w/Dual 40 Lb. Tanks
- 12VDC Battery on Pull Out Tray
- On Demand Water Heater
- 40,000 BTU Furnace w/Custom Plenum
- Residential 5 Duct Heating System w/6" Ducting
- Forced Heat Ducting to Tanks/Water System
- Fully Ducted A/C System w/Cold Air Return
- Triple 15,000 BTU Low-Profile A/Cs
- Solar Prep
- HD Roof Satellite Prep for Dual DVR Receivers
- HD Ground Satellite & Cable Prep
- HD TV Antenna

Interior: Luxury Living Room/ Dinette

- Hand Laid Vinyl Floor Tile
- Plush Residential High Durability Carpet
- Solid Hardwood Cabinetry

- Interior Ceiling Fan (some models)
- Solid Hardwood Fascia Trim Around Slide Outs
- Solid Hardwood Cabinet Stiles (Pocket Drilled/Screwed)
- Concealed Soft-Close Cabinet Door Hinges
- Raised Panel Cabinetry
- Soft-Close Full Extension Metal Drawer Guides
- LED Interior Ceiling Lighting on Dimmer Switches
- Utility Closet w/Coat Storage & Centralized Control Station
- Custom Hardwood Dinette Buffet w/Solid Surface Top (Some Models)
- Dinette Table w/Hidden Leaf Extension (Some Models) (2) Hardwood Dinette Chairs w/Fabric Accent (Some Models)
- Crown Molding Throughout
- HD Wiring Throughout

Interior: Gourmet Kitchen

- 20 Cu. Ft. Residential Stainless Steel French Door Refrigerator
- Residential Pull-Out Pantry Storage Solutions
- Pull-Out 13 Gal. Garbage Can
- Stainless Steel Convection/ Microwave
- Kohler Residential Pull-Down Faucet

- Kohler Brand Residential Workstation Sink
- Pullout Pantry Organizer System (some models)
- Pullout Undersink Storage Caddy
- High Polished Solid Surface Countertops
- Residential Style Stainless Steel Range
- Lighted Pantries & Kitchen/ Bathroom Toe Kicks

Interior: Master Bath/ Hallway

- Hardwood Steps with Woven Insert
- Hand Laid Vinyl Tile Throughout
- Washer/Dryer Prep
- Heat & A/C Ducting in Bathroom
- Maxxair® Fan in Bathroom
- One Piece Fiberglass Shower
- Sky-Light Over Shower w/LED Pot Light
- Macerator Toilet (Some Models)

Interior: Master Bedroom

- Custom Walk-in Front Closet w/Built in Dresser (Most Models)
- Custom Hardwood Wardrobe Doors
- King Bed Suite 72" x 80" w/Innerspring Mattress
- Full Storage Under Bed Base
- 32" TV

- Dimmable Over the Bed Reading Lights on Separate Switches
- Vanity Slide

Garage:

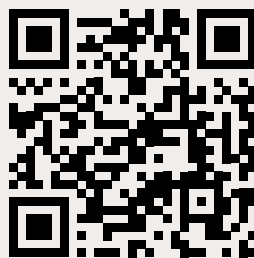
- Industrial Metal Overhead Cabinetry
- LED Lighting
- 50" LED HD TV
- Touch Screen/Blue Tooth Garage Audio/Ent. System
- Dual 30 Gal. Fuel Tanks w/Fuel Pump & Fill Station

Full House Package (Forced Option):

- 55" LED TV & Home Theatre Package
- 32" LED Bedroom TV Package
- 50" LED TV Garage
- Garage Ent. System w/Touch Screen
- 17 1/2" H-Rated Spare Tire
- Lippert On-The-Go Ladder Prep
- Frameless Thermopane Windows
- Dual Door 4-Step Entry

Executive Package (Forced Option):

- MCD Day/Night Roller Shades in Living Spaces
- MCD Night Shades Only in Bedroom & Bathrooms
- Built-In Fireplace
- 1000W Inverter w/Dual 6V Batteries
- Maxxair® Fan w/Rain Sensor - Bathroom
- Maxxair® Fan w/Rain Sensor - Kitchen
- Power Management System
- Six Point Hydraulic Leveling System
- One Touch Auto Leveling
- Keyless Entry Door (Both Doors)
- Onan 5.5 Gasoline Generator /Auto Gen. Start



SCAN TO WATCH
THE MOBILE SUITES
BRAND VIDEO

Options

Cabinets (Standards):

- Chai Hickory
- Italian White
- Toffee Grove

Décor (Standards):

- Invoke

Counters (Standards):

- Aurora Ramo

Interior:

- Theatre Seating Recliners
- Toffee Grove Folding Chair
- Solid Surface Bartop w/Storage (Some Models)

Entertainment:

- 32" LED HDTV Outdoor Ent. (Some Models)
- Winegard® Trav'ler HD Auto Satellite

Bedroom:

- Queen Bed Suite

Garage:

- Electric Drop Down Sofa/Bed
- Electric Drop Down Bed
- Fold-Up Outdoor Patio
- 3 Season Patio Door
- Removable Table

Systems/Vents/Fans:

- Heat Pump
- Maxxair® w/Switch Control – Garage
- Splendide® Front Load 2 Piece
- Splendide® XC 2,100 Combo
- ASA iN-Command®

Construction/ Running Gear:

- Power Cord Reel (Some Models)
- HBA Brake Cam (To be Ordered Special for Customers w/GM Trucks)

Exterior/Awnings:

- Slide Toppers
- Power Dinette Slide Awning w/Weathershield
- Slide Out Storage Tray (36" x 90")
- Voyager 270 Camera System
- CSA

Partial Body Paint (Standards):

- Glacier Bay
- Mystic Reserve
- Regal Heights

This brochure is based upon the latest product information available at the time of printing. DRV reserves the right to make changes at any time to prices, colors, materials, equipment, specifications and models, and to discontinue models without notice or obligation. Color representations are as close as photographic/print reproduction will allow. All specifications are approximate and dimensions nominal. Text and/or photos may represent equipment or décor items which may not be included as a standard item in your model of choice.

WELCOME TO MyDRV



MyDRV is a mobile app that allows customers to manage their RV, monitor warranty information, and track sales and past orders. You can also access a robust library of how-to content, checklists, and other valuable resources, right from your phone.

You can manage your RV online or by downloading the mobile app.

CREATE YOUR ACCOUNT

Download the mobile app or activate online.

*****@gmail.com

STEP 1

Create an account or sign in to get started.

*** ** 12345

10/14/2021

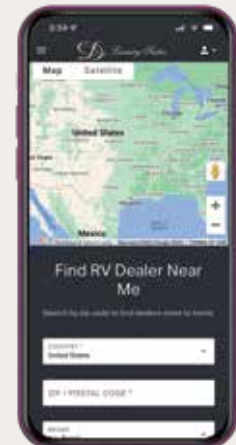
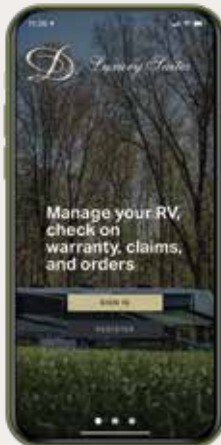
STEP 2

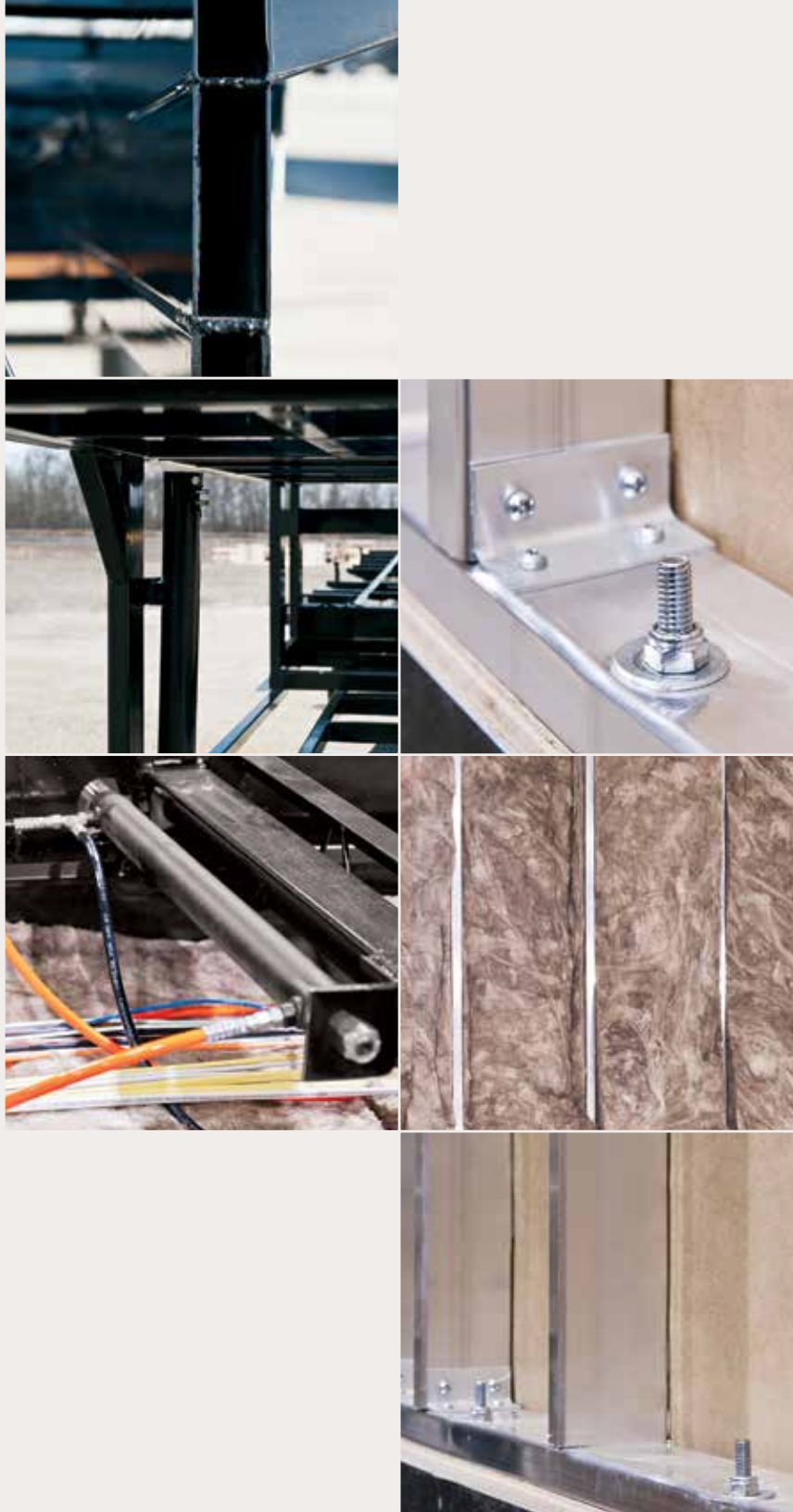
Verify your VIN number and purchase date.



STEP 3

Verify your email.





DRV Factory Tours

DRV Luxury Suites is open for factory tours, and we cannot wait to take you through the DRV build process and give you an in-depth look at the DRV Difference.

DRV factory tours are extremely important to our success and telling our story. Factory tours are a personal way to get to know our company and see many unique construction features we offer standard in all our products. We take pride in our quality and our construction and will spend as much time as we needed to make sure we answer all your questions. Factory tours are held **Monday, Wednesday, and Friday at 10 a.m. EST**, so please call ahead to schedule your tour.

Freedom is calling.

Mobile Suites

2025



Peace of mind from coast to coast.

Relax. Your new DRV fifth wheel is backed by the best customer service on the road. Whether you need a mobile tech, warranty work or just a little help figuring out your electronics, we'll make it right. Anywhere in America. *That's true freedom.*

DRVSuites.com
Destination freedom.



www.suitesowners.com | Be sure to join our outstanding DRV owner's club!

0160 W 750 N | PO Box 235 | Howe, IN 46746
Factory tours by appointment. Please call 260-562-1075 for specifics.

