



H A M P T O N



**CROSSROADS**<sup>™</sup>  
*Recreational Vehicles*

*374BAR Kitchen & Bar*



*372FDB Front Bathroom*



*372FDB Bedroom*



*372FDB Interior*



*378DBB Interior*

# STANDARDS & OPTIONS

## STANDARDS

### LIVING ROOM

- Exterior Cable w/ Satellite Hookup & Booster
- 8' from Floor to Ceiling Height (Non Loft Models)
- 7' 0" Headroom in Slide-Outs
- Two Toned Wood Fascia
- Decorative Accent Lighting
- Powered Theatre Seating
- TV Antenna w/ Cable Output
- HD LED TV
- Living Room Tri-Fold Hide-A-Bed Sofa (VBM)
- Patio Door w/ Swing-Out Assist Rail
- Interior LED Lighting
- Roller Blinds
- 15,000 BTU A/C
- 5,100 BTU Fireplace
- Ceiling Fan (VBM)

### KITCHEN

- Residential Refrigerator
- Stainless Steel Convection Microwave
- Solid Surface Countertops
- Raised Panel Cabinet Door
- Deep Stainless Steel Sink
- Faucet w/ Pull-Out Sprayer
- Residential Overhead Cabinets w/ Lighting
- Freestanding Table and Chairs
- Full Extension Ball Bearing Drawer Guides
- Residential 4 Burner Range
- 3.37 Ft<sup>3</sup> Oven Capacity

### BEDROOM

- TV Hook-up
- Deluxe Closet
- Coordinated Window Treatments & Bedspread
- King Sized Residential Mattress (VBM)
- 15,000 BTU A/C for Bedroom

### EXTERIOR

- Tinted Glass Windows
- Patio Awning
- Exterior Speakers
- Outside Faucet

- One Piece Fiberglass Front Cap
- Wi-Fi Prep

### CONSTRUCTION

- 50 Amp Service
- One Piece Radius Roof
- 3/8" Roof Decking
- 16" OC Truss Rafters with 4-1/2" Crown
- Fiberglass Roof & Floor Insulation w/ Radiant Tech Foil
- Rain Gutters Along Entire Roof Line
- 35,000 BTU Floor Ducted Furnace
- 5/8" Floor Decking
- 12" I-Beam
- 60" x 76" Patio Door
- 99" Overall Unit Width
- Electric Slides Throughout
- Dual LP Tank Hook-up (Front and Back)
- On Demand Water Heater
- Black Tank Flush
- Enclosed Underbelly
- Swing-Out Entry Assist Handle at Second Door
- Severe Weather Welded Mounts
- Blade Pure A/C System

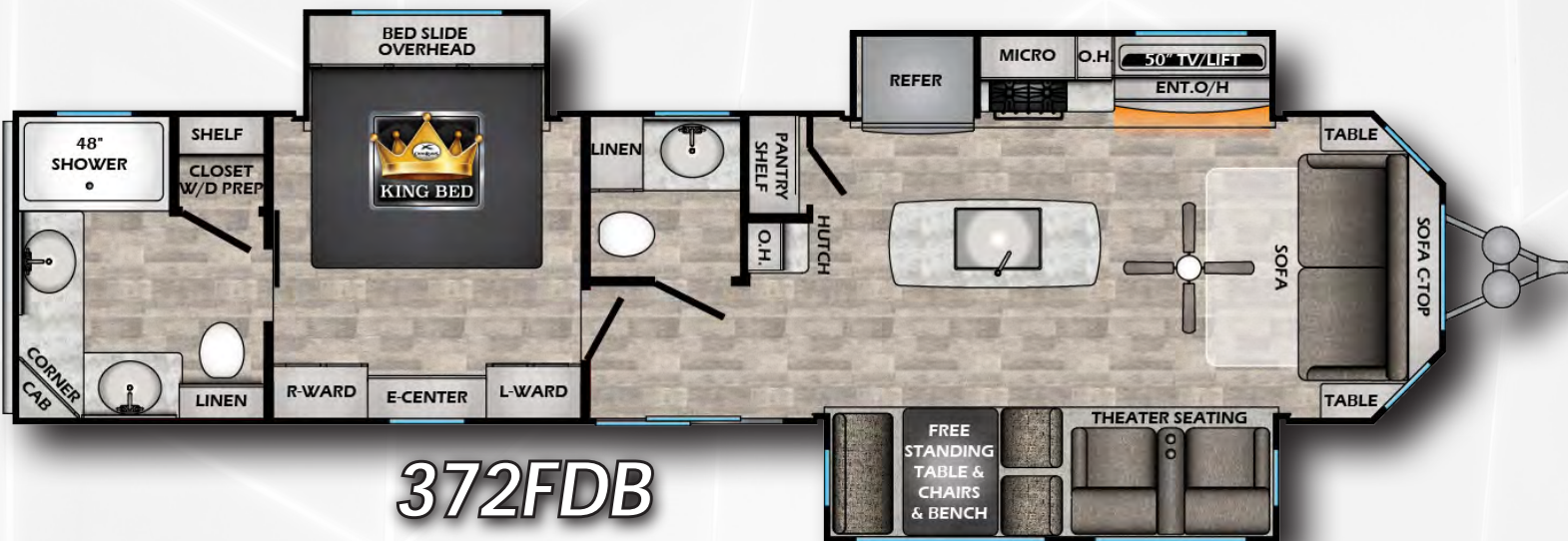
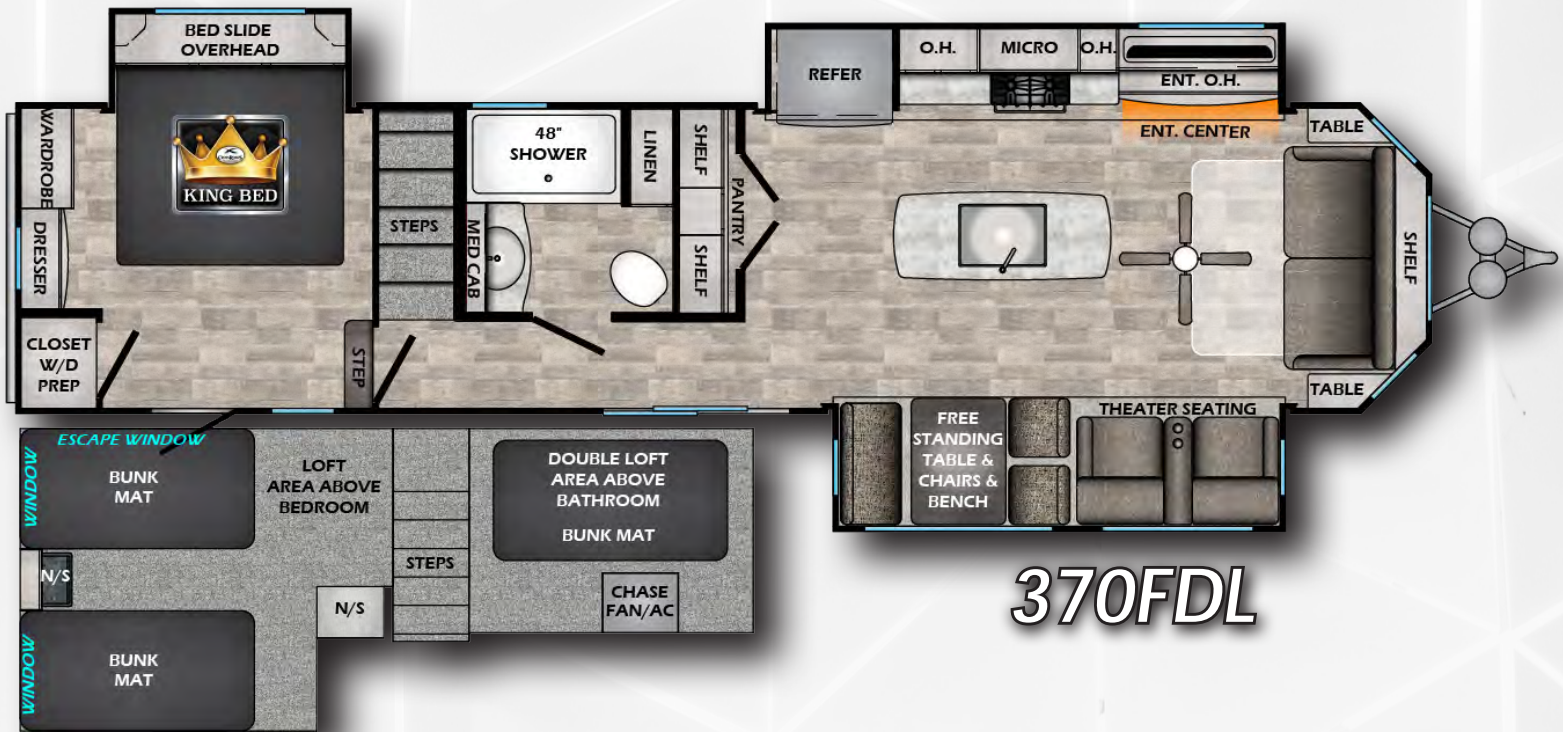
### CONVENIENCE PACKAGE (STANDARD)

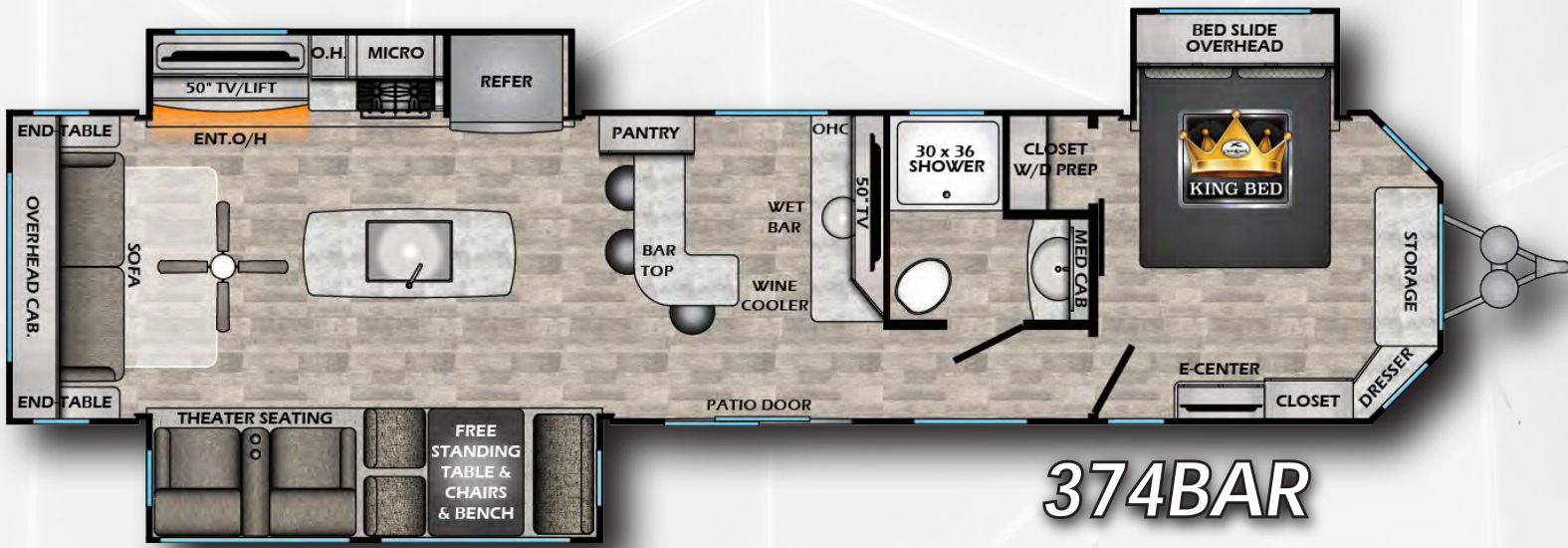
- Smoke Detector
- LP Detector
- 15,000 BTU A/C (x2)
- Awning
- Microwave
- Power Vent in Bathroom
- TV Antenna
- Custom Tub Surround
- Water Heater Bypass
- Quilted Bedspread
- KeyTV

### OPTION

- Front Cap Wrap

\*VBM: Varies By Model

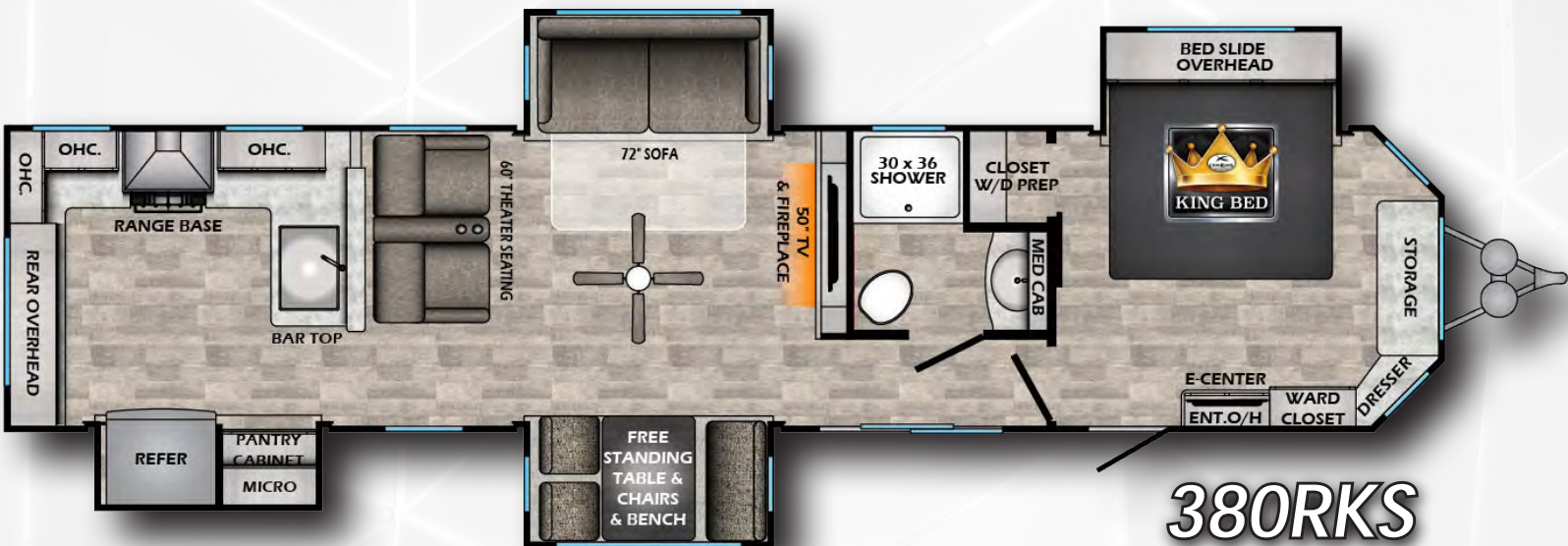




## 374BAR



## 375DBL





## 388FKL

MODEL	370FDL	372FDB	374BAR	375DBL	378DBB	380RKS	388FKL
DRY WEIGHT	11695	11020	10816	11696	11706	10928	12074
HITCH	1652	1928	1436	1610	1816	1672	1768
LENGTH	41' 4"	41' 4"	42' 0"	41' 8"	41' 8"	42' 0"	42' 11"
EXT. HEIGHT + A/C	13' 6"	13' 0"	13' 0"	13' 6"	13' 0"	13' 0"	13' 6"
FRESH WATER	50 Gal	50 Gal	50 Gal	50 Gal	50 Gal	50 Gal	50 Gal
BLACK WATER	39 Gal	78 Gal	39 Gal	39 Gal	78 Gal	39 Gal	39 Gal
GRAY WATER	117 Gal	78 Gal	78 Gal	84 Gal	117 Gal	78 Gal	117 Gal

# DECOR



[www.crossroadsrv.com](http://www.crossroadsrv.com) • 1140 W. Lake St Topeka, IN 46571 • (260) 593 - 3850

DISCLAIMER: Product information is as accurate as possible as of the date of publication of this brochure. All features, floor plans, and specifications in this brochure are subject to change without notice. Please also consult CrossRoads' web site at [www.crossroadsrv.com](http://www.crossroadsrv.com) for more current product information and specifications. Tow Vehicle Disclaimer. CAUTION: Owners of CrossRoads recreational vehicles are solely responsible for the selection and proper use of tow vehicles. All customers should consult with a motor vehicle manufacturer or their dealer concerning the purchase and use of suitable tow vehicles for CrossRoads products. CrossRoads disclaims any liability or damages suffered as a result of the selection, operation, use or misuse of a tow vehicle. CROSSROADS' LIMITED WARRANTY DOES NOT COVER DAMAGE TO THE RECREATIONAL VEHICLE OR THE TOW VEHICLE AS A RESULT OF THE SELECTION, OPERATION, USE OR MISUSE OF THE TOW VEHICLE. REFERENCE CROSSROADS RV COMPANY OWNERS MANUAL FOR LIMITED WARRANTY DETAILS. \*Length is defined as the distance from the centerline of hitch pin/coupler to rear bumper of trailer.